



# Heavy Mountain Snowfall Likely

December 23, 2021  
3:55 PM

Travel Impacts Expected Christmas Eve

## Key Messages

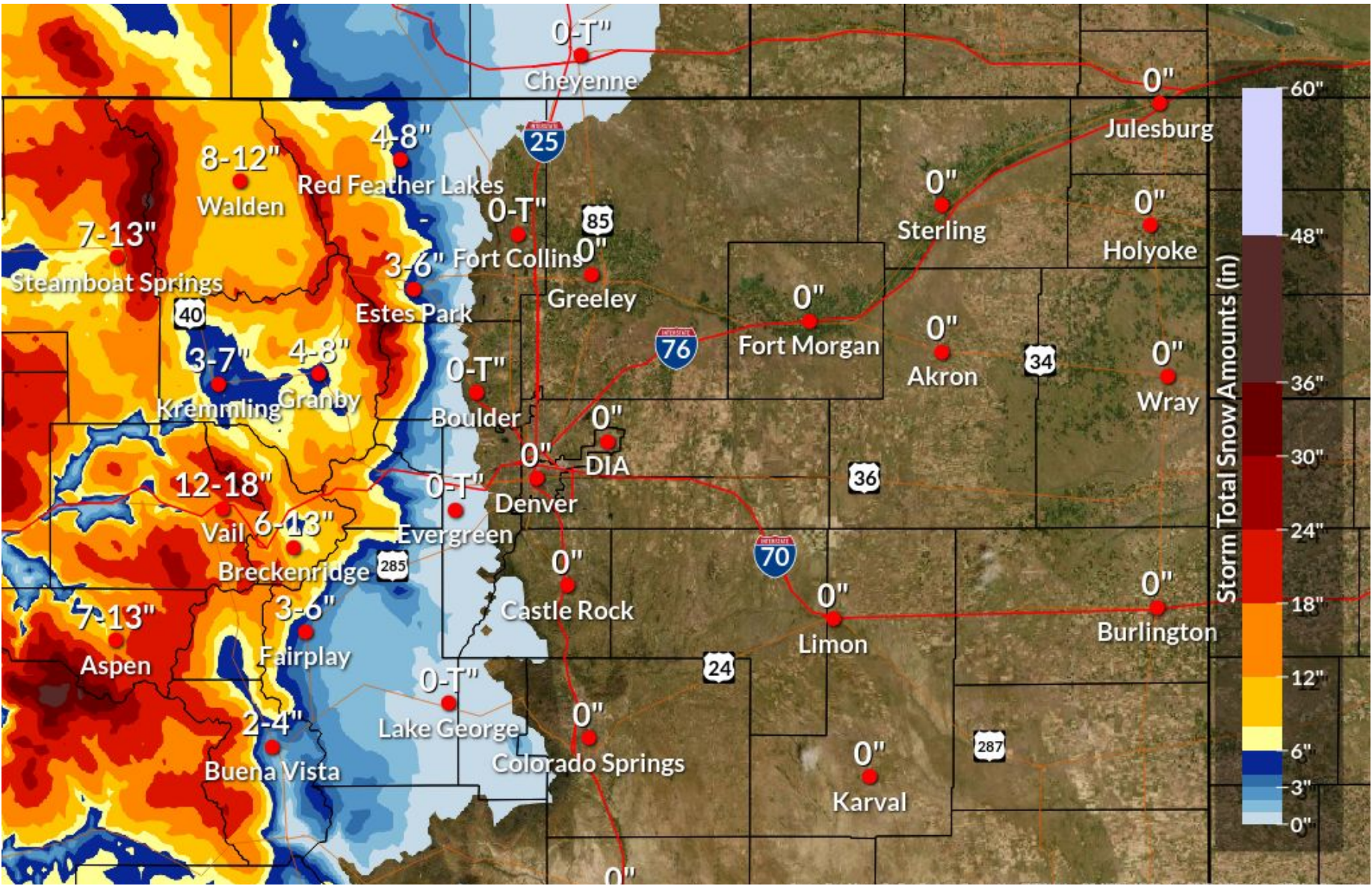
- Heavy mountain snow is expected to develop this evening and into tonight
- Snow continues into Friday
- Light snow will gradually come to an end Friday night and Saturday morning

## **NEW** Important Updates

- Initial Briefing

## Next Scheduled Briefing

- Friday AM



Additional Snowfall thru Saturday AM







# Headline Details

December 23, 2021  
3:55 PM

## Warning & Advisory Details



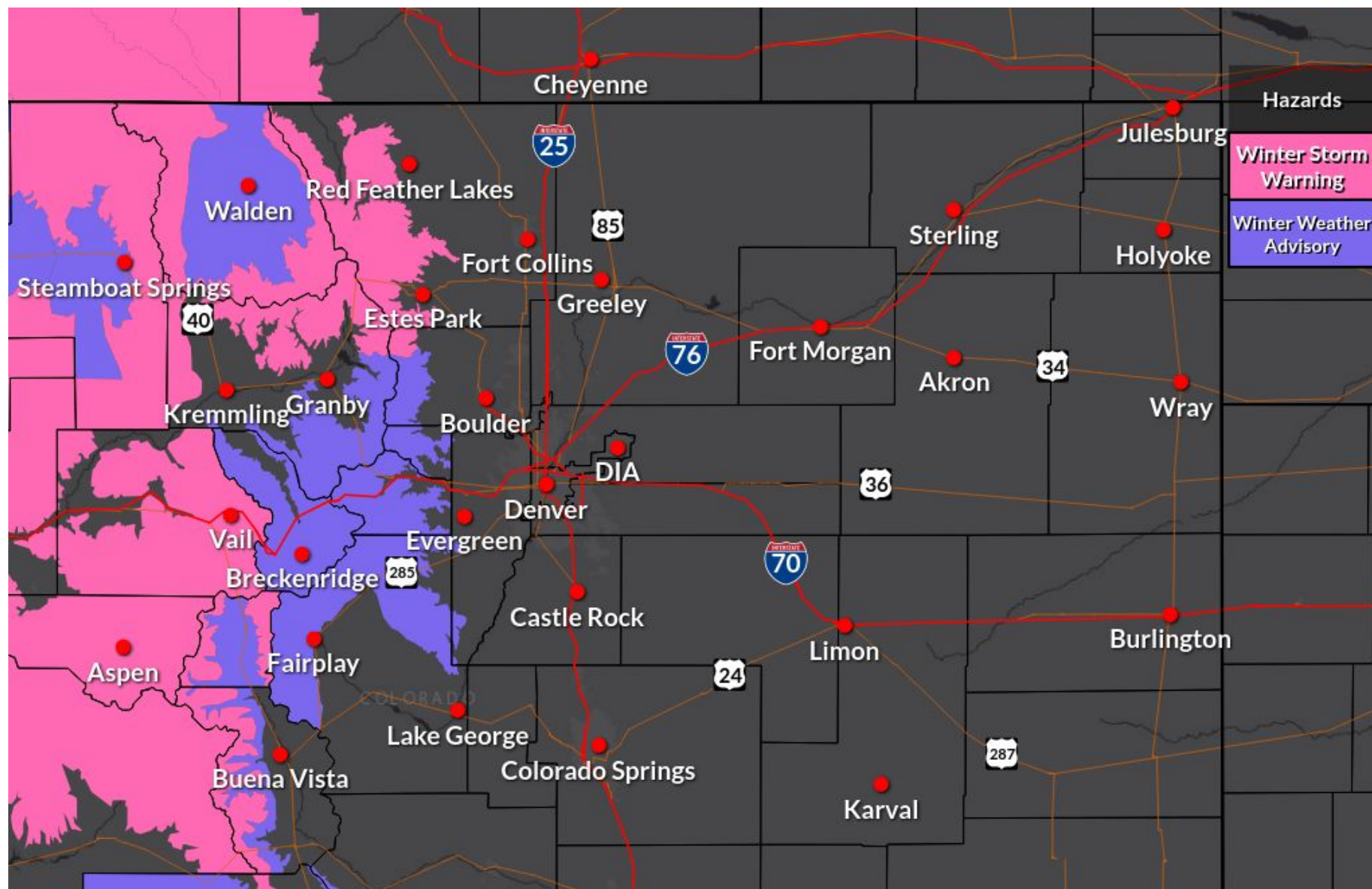
Winter Storm Warning and Winter Weather Advisory in effect until 5 AM Saturday



Snow, heavy at times, and blowing snow

## Quick Forecast

- Snow intensity and coverage increases this evening
- Moderate to heavy snowfall rates up to 2"/hr overnight into Friday
- Mountain snow diminishes Saturday morning



## Current Warnings & Advisories



National Oceanic and  
Atmospheric Administration  
U.S. Department of Commerce

National Weather Service  
Denver, CO





# Snow & Impacts

December 23, 2021  
3:55 PM

## Forecast Confidence Levels

### Timing

Low	Medium	High
-----	--------	------

Snow will continue to develop this evening and overnight, becoming heavy at times.

### Snow Amounts

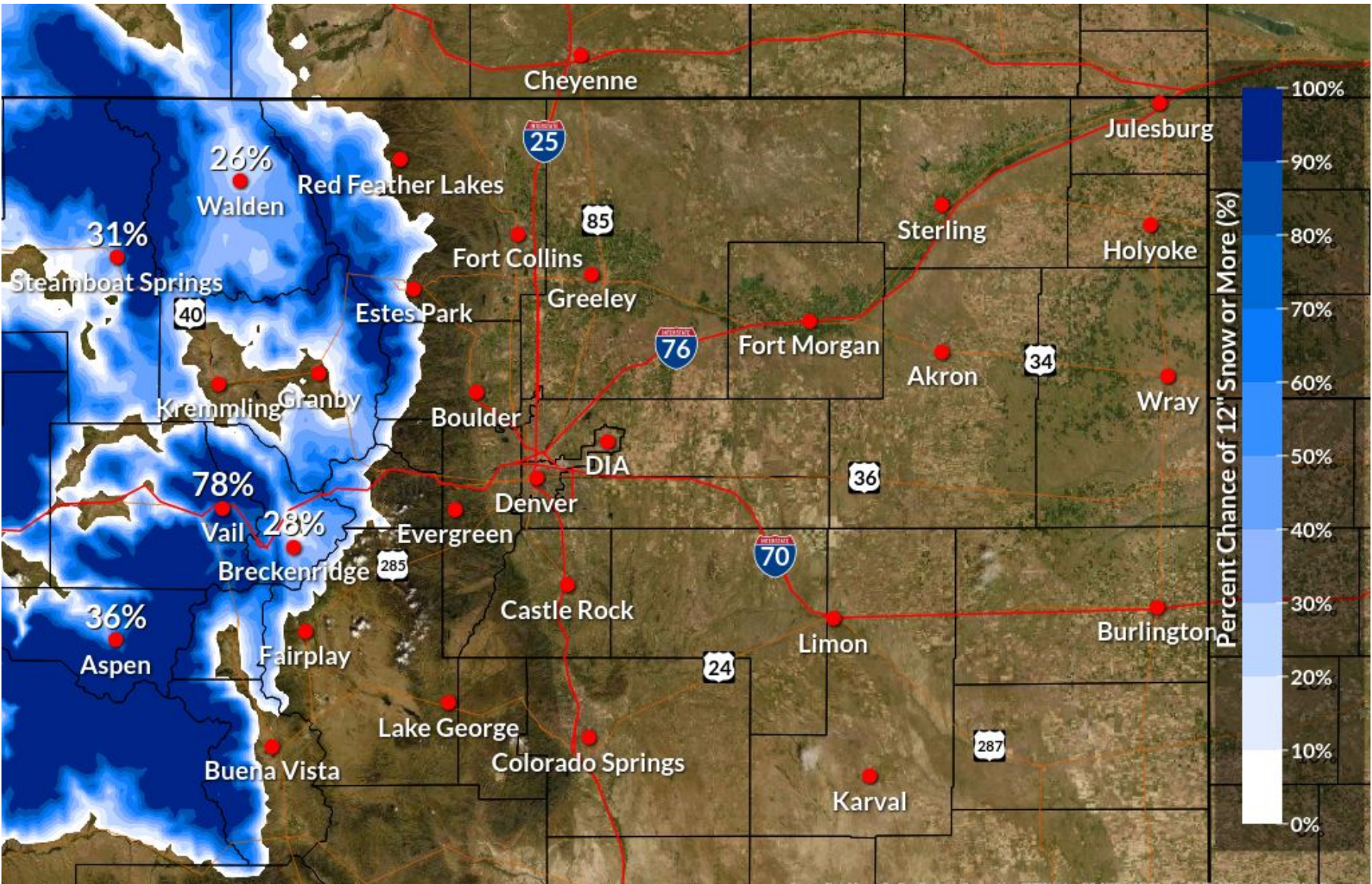
Low	Medium	High
-----	--------	------

Some uncertainty in snowfall totals across Middle & North Park, but confidence is high in significant snowfall totals for Mountains

### Travel Impacts

Low	Medium	High
-----	--------	------

Heavy snowfall totals over I-70/Hwy 40 corridors could cause impacts to those traveling tonight and Friday



Probability of Snow of 12" or More







# Winter Storm Severity Index

December 23, 2021  
3:55 PM

Impacts through Saturday Morning

## Key Points



→ Moderate to heavy snowfall rates Thursday evening through Friday



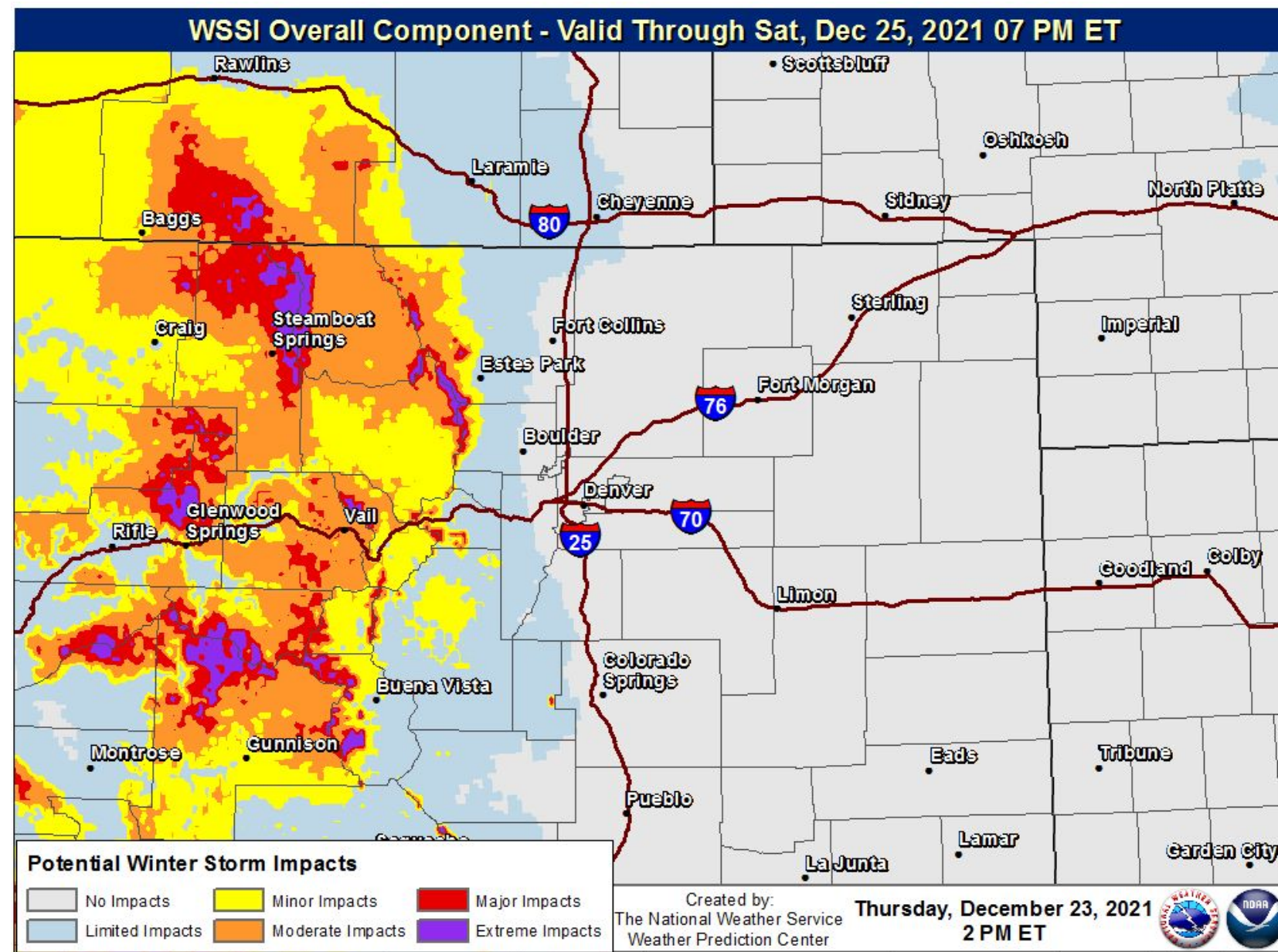
→ Wind gusts up to 55 mph

## Travel Impacts



→ Blowing snow and poor visibility

→ Slippery road conditions



Winter Storm Severity Index



National Oceanic and  
Atmospheric Administration  
U.S. Department of Commerce

National Weather Service  
Denver, CO



# Summary

December 23, 2021  
3:55 PM



**Hazards:** Heavy mountain snow, with some blowing snow.



**Areas Impacted:** Mountains, including the I-70 and Highway 40 corridors



**Timing & Duration:** Heavy snow tonight and Friday, ending Saturday morning.



**Impacts:** Snow and blowing snow could cause travel impacts, especially near Rabbit Ears Pass and along I-70 between the Eisenhower Tunnel and Vail Pass



**Certainty & Considerations:** High confidence in snowfall timing and amounts. Holiday travel could be impacted across the mountains.





# County Information

December 23, 2021  
3:55 PM

Click on the Links Below for Each County

[Denver Metro](#)  
[Eastern Adams &  
Arapahoe Counties](#)  
[Boulder County](#)  
[Clear Creek County](#)  
[Douglas County](#)  
[Elbert County](#)  
[Gilpin County](#)  
[Grand County](#)  
[Jackson County](#)  
[Jefferson County](#)

[Larimer County](#)  
[Lincoln County](#)  
[Logan County](#)  
[Morgan County](#)  
[Park County](#)  
[Phillips County](#)  
[Sedgwick County](#)  
[Summit County](#)  
[Washington County](#)  
[Weld County](#)

