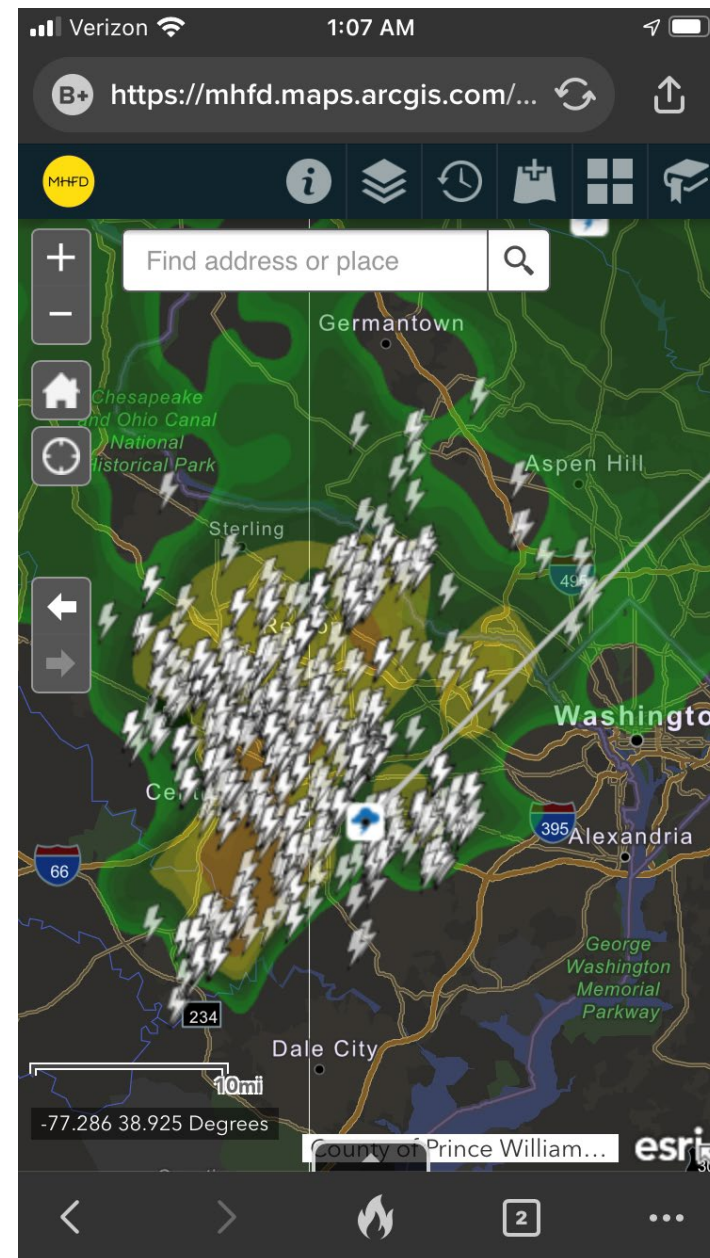


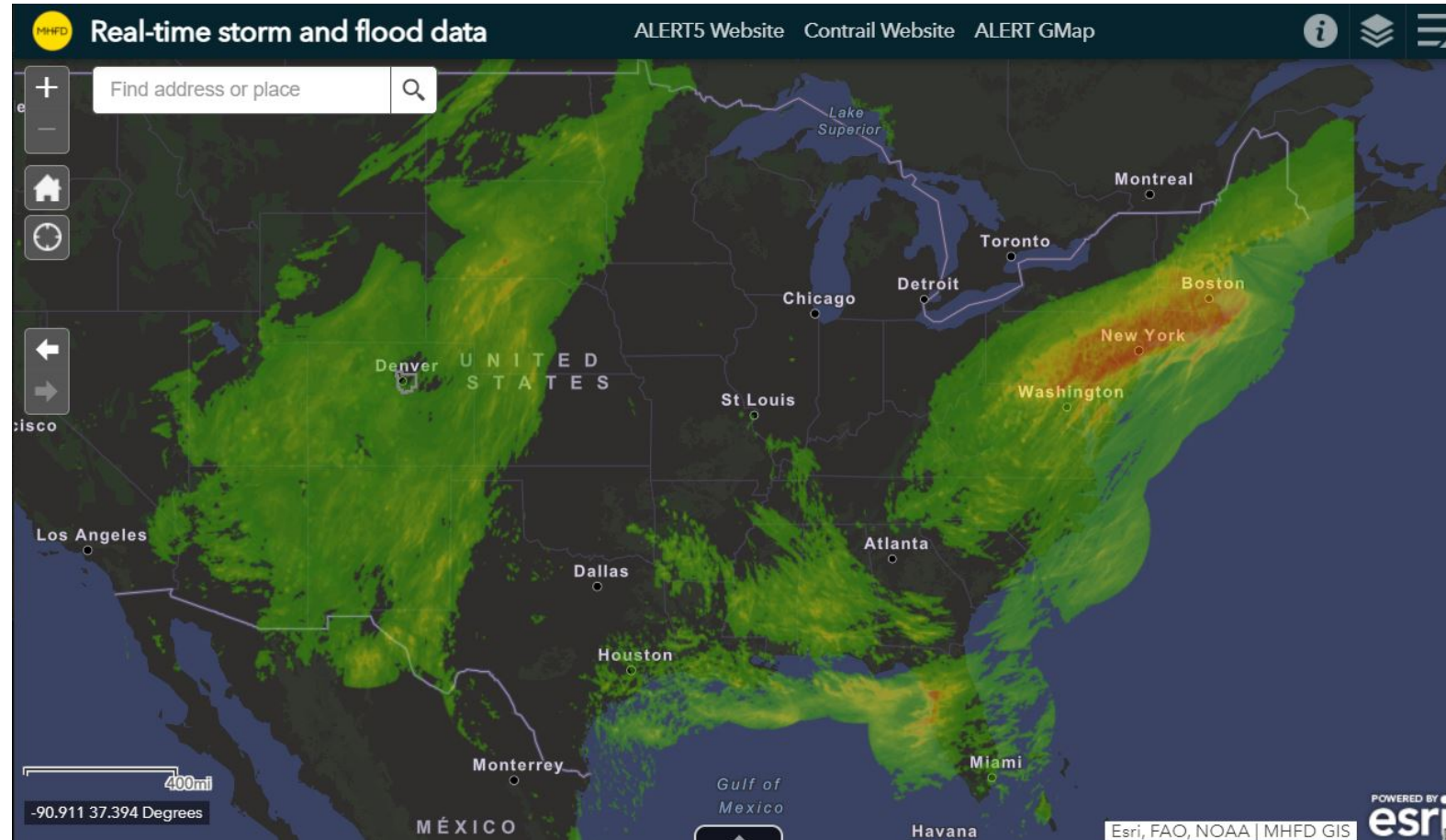


24-Hr Radar-Estimated Rainfall (September 2, 2021)



Historic inland impacts from Hurricane Ida

Images from <https://mhfd.org/webmaps/Real-time/>





Real-time storm and flood data

[ALERT5 Website](#) [Contrail Website](#) [ALERT GMap](#)



Michigan

Indiana



Lake Huron

Owen Sound

Barrie

Ottawa

Montreal

Brockville

Kingston

Montpelier

Augusta

Saint John

Bay of Fundy

Halifax

Yarmouth

Toronto

Lake Ontario

Rochester

Buffalo

New York

Albany

Concord

Boston

Providence

Sarnia

London

Detroit

Lake Erie

Cleveland

Pittsburgh

Pennsylvania

New York

Harrisburg

Philadelphia

Columbus

Indiana

Fort

Charleston

Jefferson National Forest

Richmond

Washington

Dover

Norfolk

100mi

-73.453 41.419 Degrees

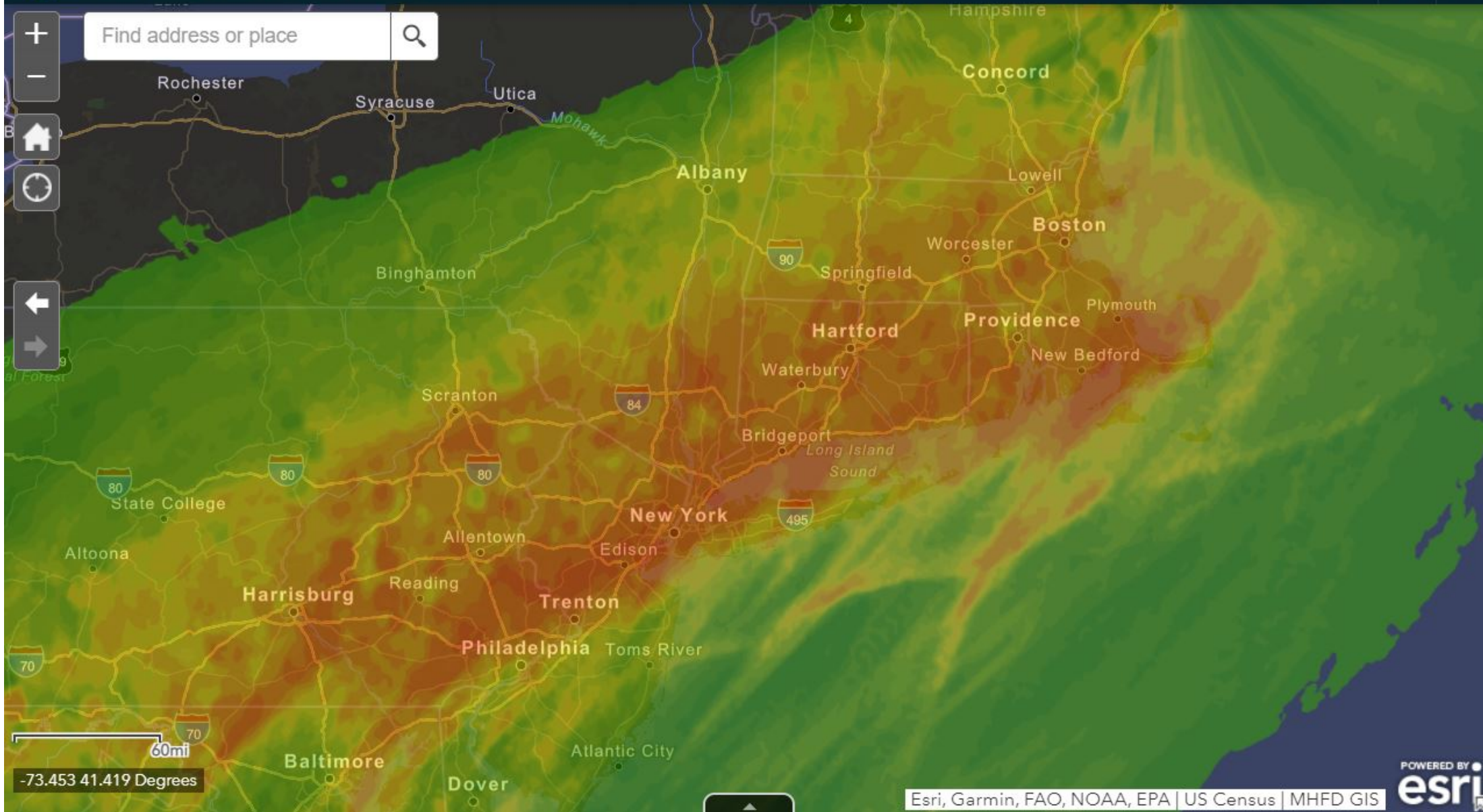
Esri, FAO, NOAA | MHFD GIS





Real-time storm and flood data

[ALERT5 Website](#) [Contrail Website](#) [ALERT GMap](#)



-73.453 41.419 Degrees

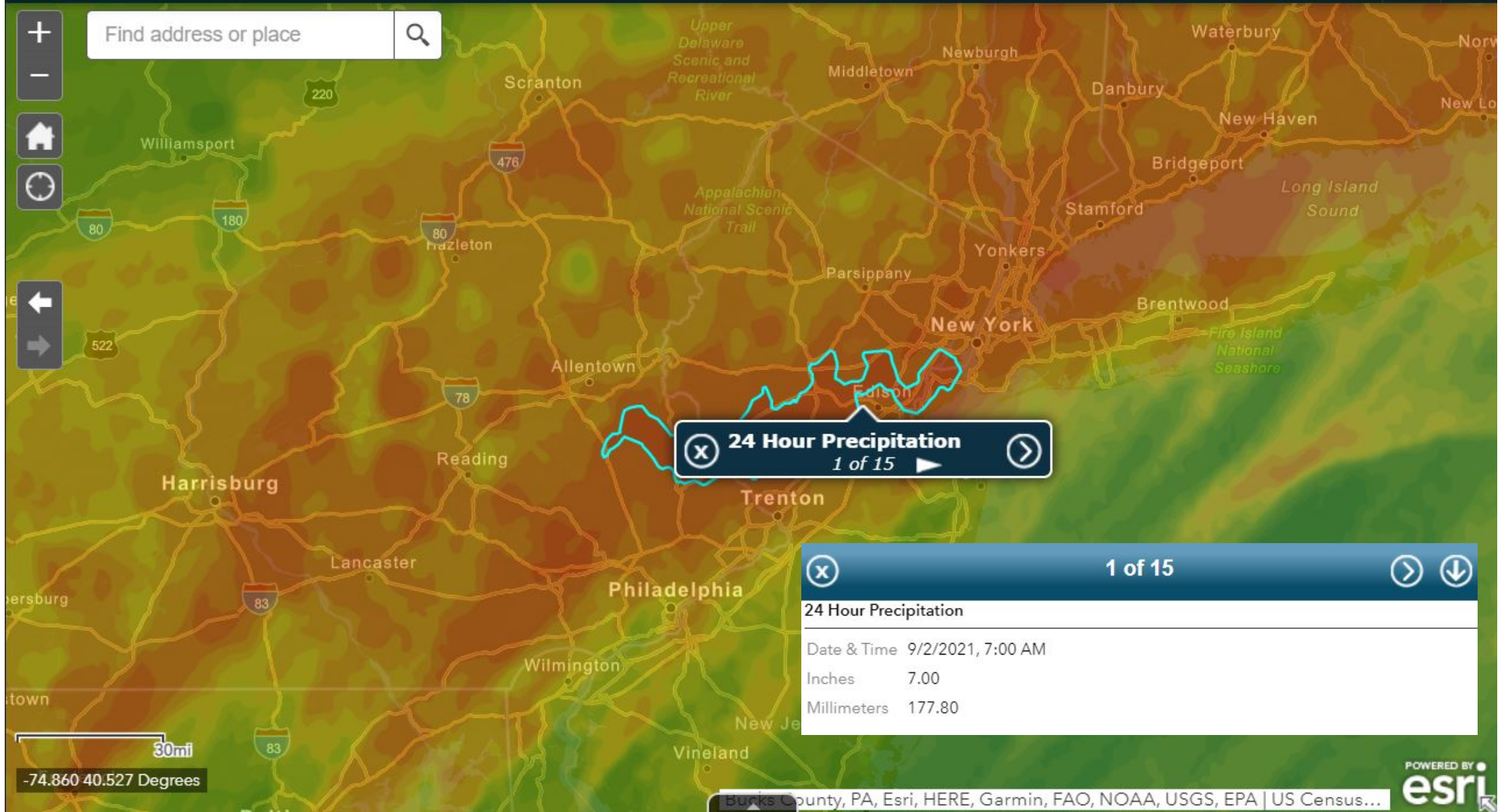
Esri, Garmin, FAO, NOAA, EPA | US Census | MHFD GIS





Real-time storm and flood data

[ALERT5 Website](#) [Contrail Website](#) [ALERT GMap](#)



24 Hour Precipitation
1 of 15

24 Hour Precipitation
1 of 15

Date & Time	9/2/2021, 7:00 AM
Inches	7.00
Millimeters	177.80

30mi
-74.860 40.527 Degrees

Bucks County, PA, Esri, HERE, Garmin, FAO, NOAA, USGS, EPA | US Census...

